



- Dusj
- Veggmontert
- Forkrommet
- Lyddemper(e)

Teknisk data

Flow attributter

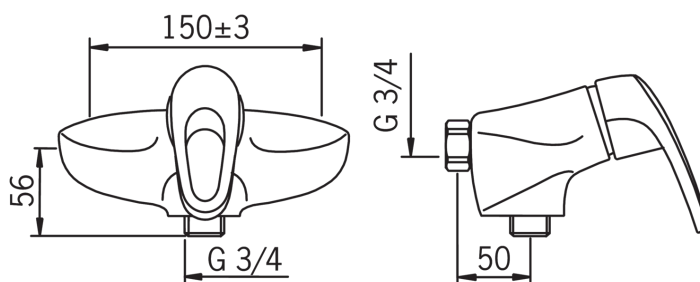
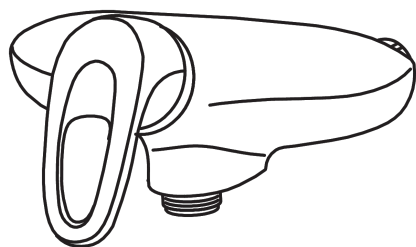
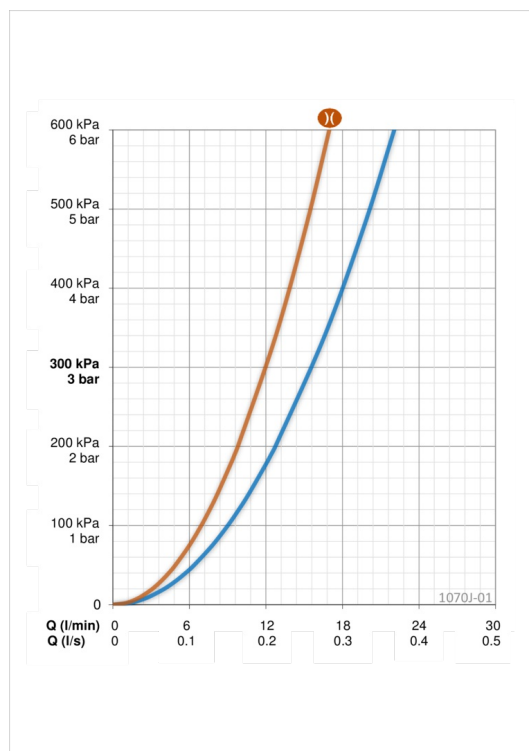
| | |
|--|-----------------|
| Vannmengde ved 300 kPa | 0.26 l/s |
| Vannmengde ved 300 kPa (med mengdebegrenser) | 0.2 l/s |
| Trykktap 0.2 l/s (med mengdebegrenser) | 300 kPa |
| Trykktap (0.2 l/s) | 180 kPa |

Tekniske egenskaper

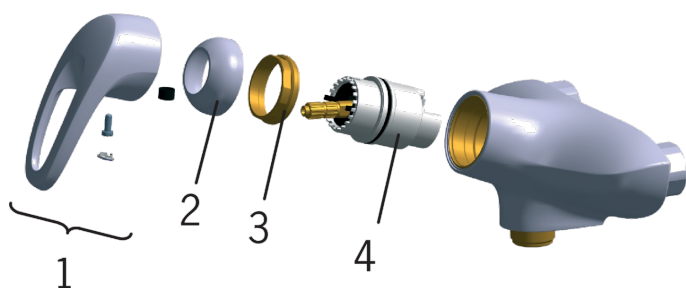
| | |
|---------------------|----------------------|
| Varmtvannsforsyning | max. +80°C |
| Arbeidstrykk | 50 - 1000 kPa |

Bestemmelser

| | |
|--------------------|---------------------|
| Støyklasse 0.2 l/s | I (ISO 3822) |
|--------------------|---------------------|



Reserve deler



SP1070J-01

| | Navn | Kode | NRF |
|----|-------------------------|---------|---------|
| 01 | Hendel | 600284V | 4202803 |
| 02 | Dekkring | 158174 | 4204506 |
| 03 | Festemutter for kassett | 158726 | 4204528 |
| 04 | Kassett | 158890 | 4204627 |