



- Shower
- Single lever
- Wall mounted
- Chrome

Technical data

Flow properties

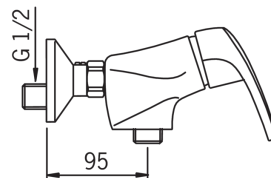
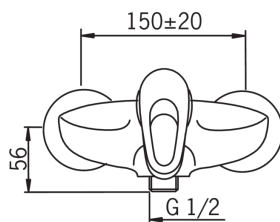
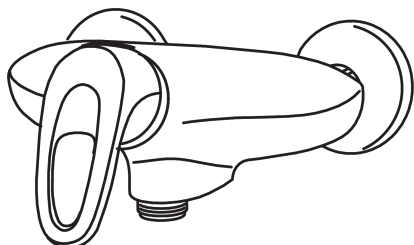
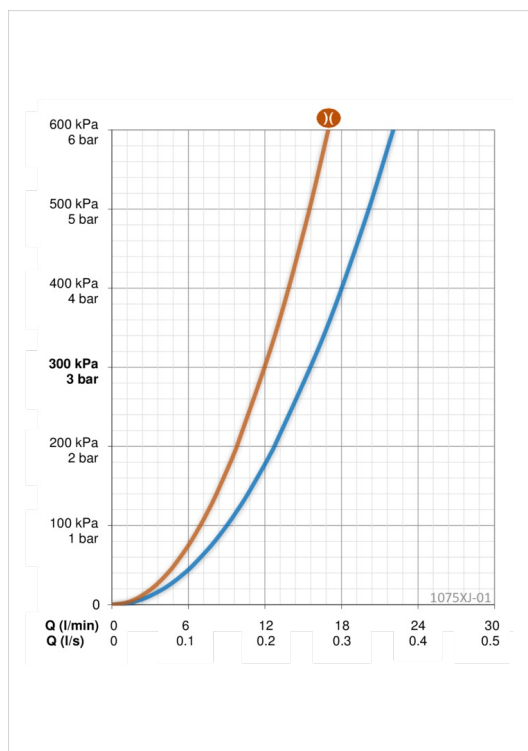
Flow-rate at 300 kPa	0.26 l/s
Flow-rate at 300 kPa (with flow reducers)	0.2 l/s
Pressure loss 0.2 l/s (with flow reducers)	300 kPa
Pressure loss with flow (0.2 l/s)	180 kPa

Technical properties

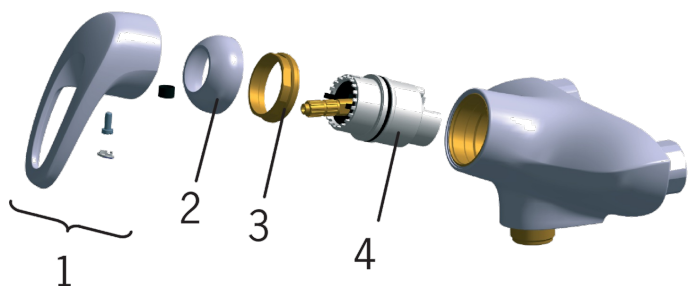
Hot water supply	max. +80°C
Working pressure	50 - 1000 kPa

Regulations

Noise class 0.2 l/s	I (ISO 3822) Oras lab.
---------------------	-------------------------------



Spare parts



SP1070J-01

	Code
01	600284V
02	158174
03	158726
04	158890