

EAN: 6414150071188
static.oras.com/1904F-102



- Washbasin
- Single-lever
- Deck mounted
- Chrome
- Single operating lever/handle, Hot/Cold symbols
- Flexible inlet pipes

Technical data

Flow properties

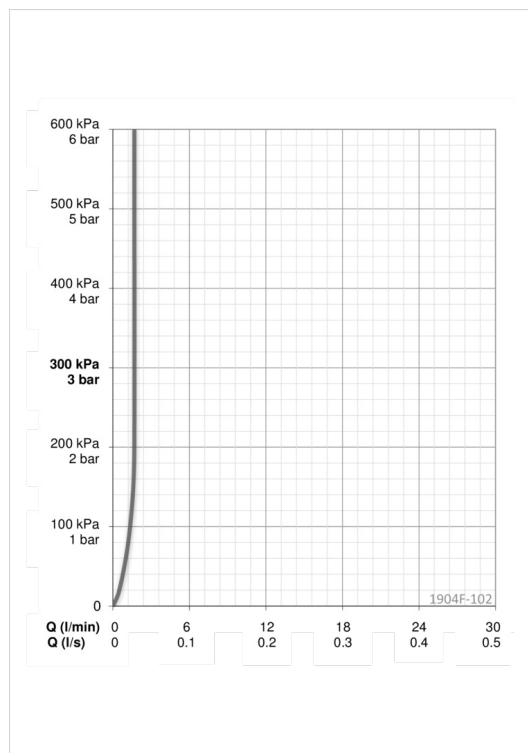
Flow-rate at 300 kPa (with flow controller)	0.028 l/s
Pressure loss with flow (0.1 l/s)	85 kPa

Technical properties

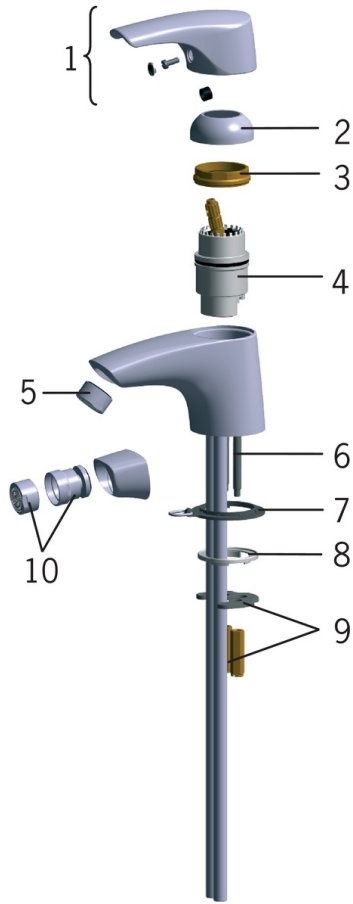
Hot water supply	max. +80°C
Working pressure	50 - 1000 kPa

Regulations

EN standard	EN 817
Noise class	I (ISO 3822)



Spare parts



SP1904F-102

	Name	Code
01	Lever, (2007-)	159260V
02	Covering cap	158174
03	Tightening nut	158726
04	Cartridge	158890
05	Aerator, M24x1, -102	601255V
06	Fixing screw (10 pcs), M6x55	158727/10
07	Washer with chain holder	159264V
08	Washer set	159425/10
09	Fixing plates with nuts	158697
10	Aerator with ball joint, M24x1/M24x1	232511