

EAN: 6414150078262  
[static.oras.com/3946F](http://static.oras.com/3946F)

Bath faucet with diverter. There are also in-built limitation options for water temperature and maximum flow-rate. F= with flexible pipes

- Bathtub & Shower
- Single-lever
- Rim mounted
- Chrome
- Fixed spout
- Standard aerator
- Single operating lever/handle, Hot/Cold symbols
- Pull operated diverter
- Limitation option for maximum temperature and flow-rate
- Non-return valve(s),  $\varnothing$  35 mm ceramic cartridge for flow and temperature control
- Flexible inlet pipes



## Technical data

### Flow properties

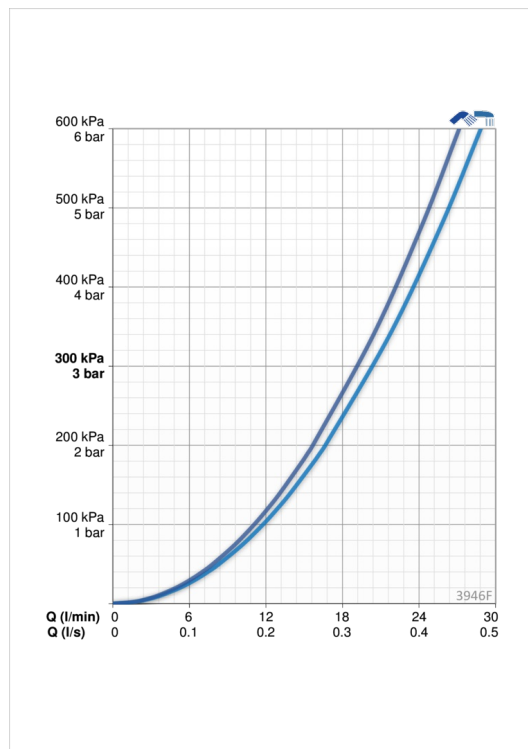
Flow-rate at 300 kPa	<b>0.34 / 0.32 l/s</b>
Pressure loss with flow (0.3 l/s)	<b>250 kPa</b>

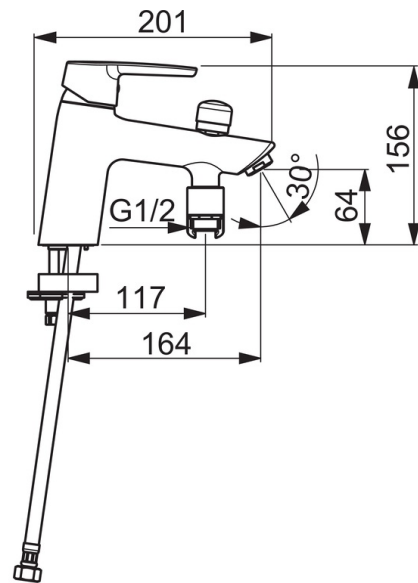
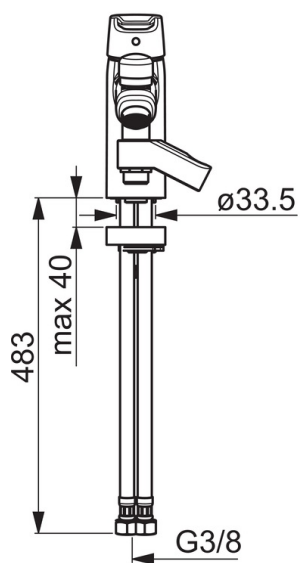
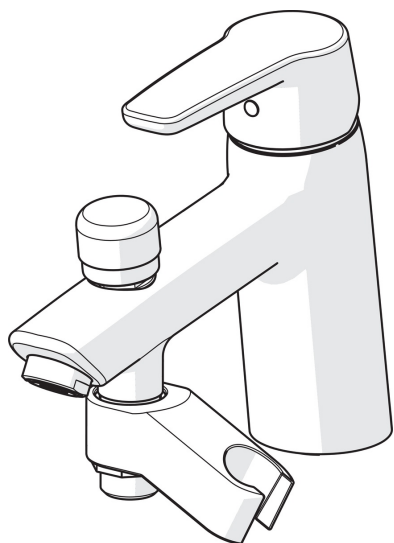
### Technical properties

Hot water supply	<b>max. +80°C</b>
Working pressure	<b>50 - 1000 kPa</b>
Connection size	<b>G3/8</b>
Material	<b>Brass</b>

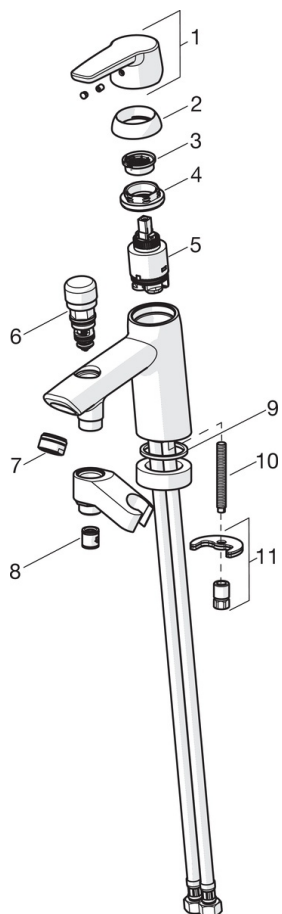
### Regulations

EN standard	<b>EN 817</b>
Noise class	<b>II (ISO 3822)</b>





### Spare parts



#### SP3946F

	Name	Code
01	Lever	1000801V
02	Covering cap	601967V
03	Temperature adjustment limiter	601973V
04	Tightening nut, M40x1, SW30	601968V
05	Cartridge, 3.5 Classic	601969V
06	Diverter	602623V
07	Aerator, M24x1 D	602104V
08	Non-return valve	601989V
09	Gasket, 43x37x3	602624/10
10	Fixing screw, M8x1, L=140	601970V
11	Fixing set	601985V