

EAN: 6414150027260

www.oras.com/en/products/oras/product/6134



Touchless washbasin faucet with a mixing valve. Plug transformer 230/12 V. Recognition range can be adjusted at the faucet. The faucet is equipped with litter filters and non-return valves. 3, 6 and 9 meters photocell cables available: Oras No.198081/3198081/6198081/9

- Public & Semi-public
- Touchless, Plug transformer
- Deck mounted
- Chrome
- Fixed spout, Casted construction
- HONEYCOMB® - improved lime protection
- Temperature control handle
- Litter filter(s), Non-return valve(s)
- Infrared sensor, Power supply

Technical data

Flow properties

| | |
|---|-----------------|
| Flow-rate at 300 kPa (with flow controller) | 0.11 l/s |
| Pressure loss with flow (0.1 l/s) | 170 kPa |

Technical properties

| | |
|------------------|-----------------------|
| Hot water supply | max. +70°C |
| Working pressure | 100 - 1000 kPa |
| Connection size | G3/8 |
| Projection | 120 mm |
| Material | Brass |

Software settings

| | |
|------------------|--------------------------|
| Afterflow period | 1 s (0-255 s) |
| Max. flow period | 2 min (1 - 255 s) |

Electronic properties

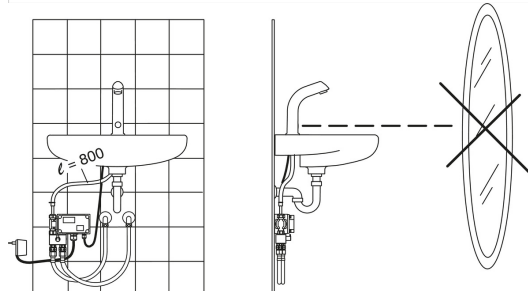
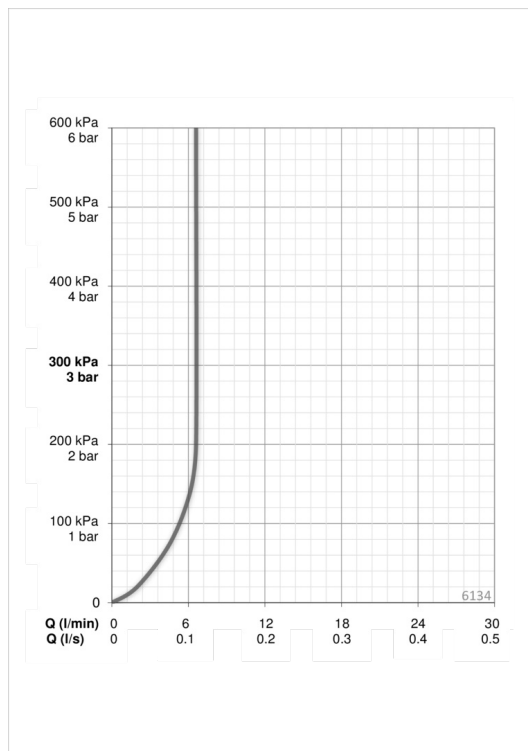
| | |
|-----------------------|---------------------|
| Electrical Connection | 230 / 12 VAC |
|-----------------------|---------------------|

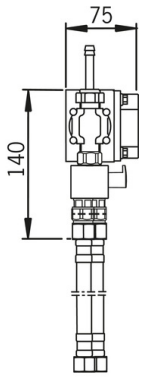
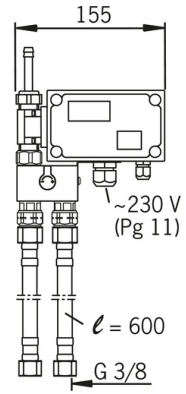
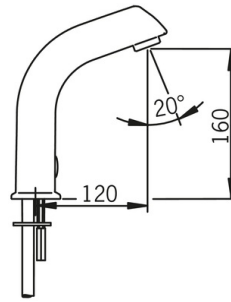
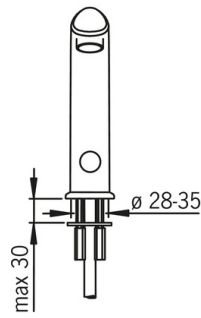
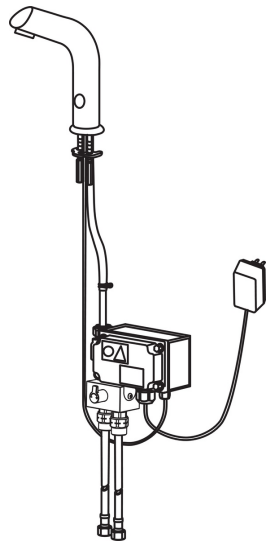
Regulations

| | |
|------------------|----------------------------------|
| EMC Directive | CE 89/336/EEC |
| EN standard | EN 15091 |
| Noise class | I (ISO 3822) |
| Protection class | IP 67 / transformer IP 40 |

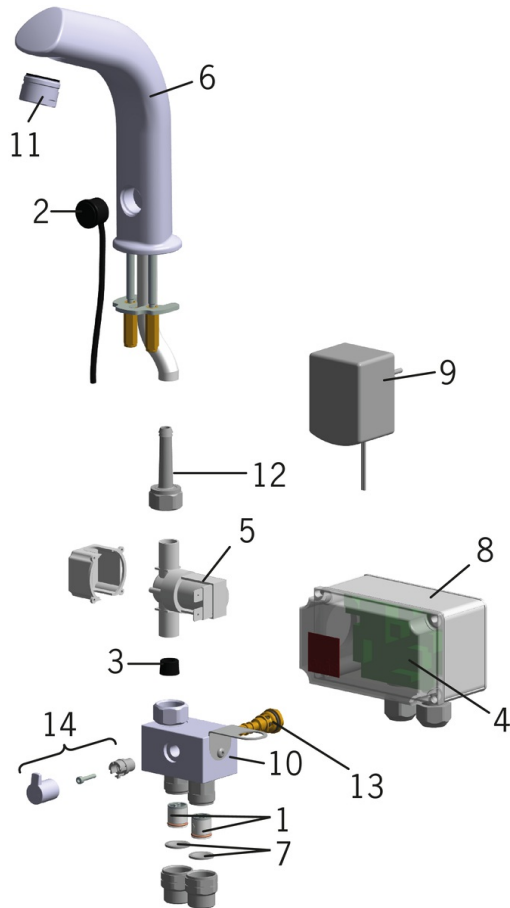
Type approvals

| | |
|-----------------|-----------------------------|
| STF certificate | STF VTT-RTH-00112-11 |
|-----------------|-----------------------------|





Spare parts



SP6134

| | Name | Code |
|----|----------------------------|----------|
| 01 | Non-return valve, DN15 | 105311 |
| 02 | Photocell, 9 m | 198081/9 |
| 02 | Photocell | 198081 |
| 02 | Photocell, 3 m | 198081/3 |
| 02 | Photocell, 6 m | 198081/6 |
| 03 | Flow limiter, 6 l/min | 198084 |
| 04 | Circuit card, 12 V | 198087 |
| 05 | Solenoid valve, 12 V | 198090 |
| 06 | Spout | 198093 |
| 07 | Litter filters, DN15 | 198094/2 |
| 08 | Control box, 12 V | 198097 |
| 09 | Transformer, 230/12 V | 198099 |
| 10 | Mixing valve | 600934V |
| 11 | Aerator, M24 x 1 STD HC A | 232211 |
| 12 | Hose coupling, G1/2XD9 | 198008V |
| 13 | Temperature regulator | 199201V |
| 14 | Temperature control handle | 600493V |