

EAN: 6414150066368

www.oras.com/en/products/oras/product/6388



Thermostatic shower faucet which quickly and accurately reacts on the temperature changes of input water maintaining the requested temperature. The temperature control handle is equipped with a temperature regulator which can be bypassed by pressing the button (preset to 38°C). Oras Eterna's EcoLed press pad indicates with signal lights the ideal duration of shower considering water and energy consumption and acts as a flow regulator.

The faucet is delivered with litter filters and one-way valves.

Oras Natura shower set: With the eco-button on the hand shower you can save up to 50 % of water.

Shower set includes: shower rail (adjustable installation distance), hand shower, hand shower holder, shower hose, a spacious soap cup and a wall bracket

- Shower
- Battery-operated, Thermostatic
- Wall mounted
- Chrome
- Temperature control handle, Flow control handle, Eco feature for water flow
- Press pad with EcoLed
- Hand shower, Shower rail, Adjustable shower rail bracket, Soap dish, Shower holder, Shower hose (1500 mm)
- Thermostatic cartridge for automatic temperature control, Litter filter(s), Non-return valve(s), Mixing valve for manual temperature control
- Solenoid valve, Light indicated function(s), Low battery indicator
- Direct connection, Internal thread
- Filling time: 10 min (0 - 15 min)

Technical data

Flow properties

Eco-flow at 300 kPa	0.12 l/s
Flow-rate at 300 kPa	0.22 l/s
Pressure loss with flow (0.2 l/s)	250 kPa

Technical properties

Hot water supply	max. +70°C
Working pressure	100 - 1000 kPa
Connection size	G1/2
Installation width	CC150± 3 mm
Material	Brass

Software settings

Max. flow period	4 min
------------------	--------------

Electronic properties

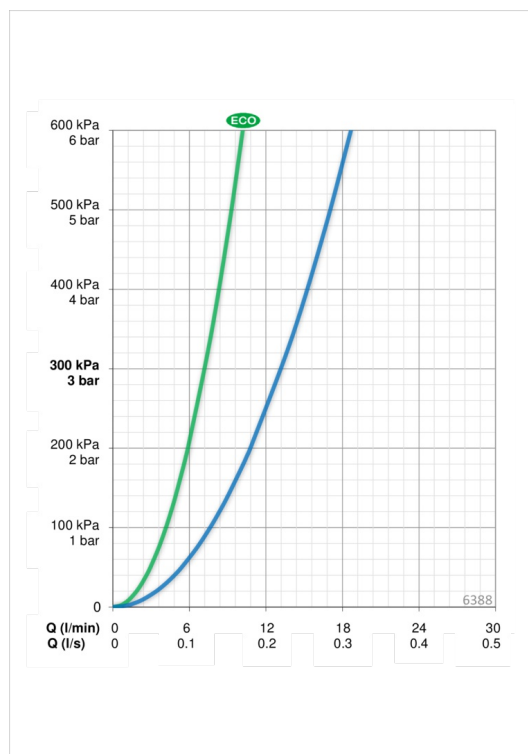
Battery	AA 1.5 V Lithium x 2
---------	-----------------------------

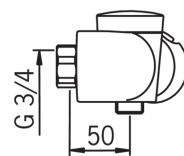
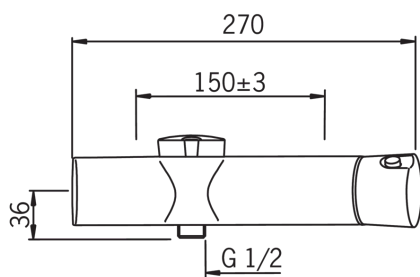
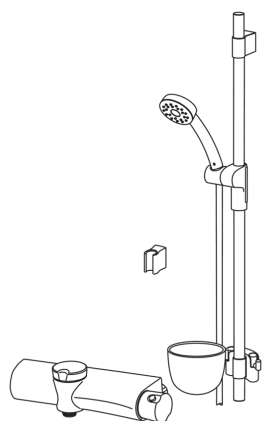
Regulations

EMC Directive	CE 2004/108/EY
EN standard	EN 1111 , EN 15091
Noise class	I (ISO 3822)
Protection class	IP 55

Type approvals

STF certificate	STF VTT-RTH-00064-12
-----------------	-----------------------------





Spare parts

SP500

	Name	Code
01	Slide for shower rail	600536V
02	Wall bracket	600538V



SP6370

	Name	Code
01	Cover plate	600609V
02	Control unit, 3 V	602269V
03	Battery, 1,5 V AA Lithium	600599V
04	EcoLed press pad	602180V
05	Solenoid valve	602182V
06	Filter sealing, G3/4	178375V
07	O-ring kit	178796V
08	Thermostatic cartridge	178780V
09	Temperature control handle	600612V
10	Update kit	602303V

