

EAN: 6414150050978

www.oras.com/en/products/oras/product/6420G



- Bathroom
- Touchless, External transformer
- Deck mounted
- Chrome
- CASCADE® - aerated stream
- Autofocus infrared sensor, Impulse-controlled solenoid valve

Technical data

Flow properties

Flow-rate at 300 kPa (with flow controller)	0.1 l/s
Pressure loss with flow (0.1 l/s)	200 kPa

Technical properties

Hot water supply	max. +70°C
Working pressure	100 - 1000 kPa

Software settings

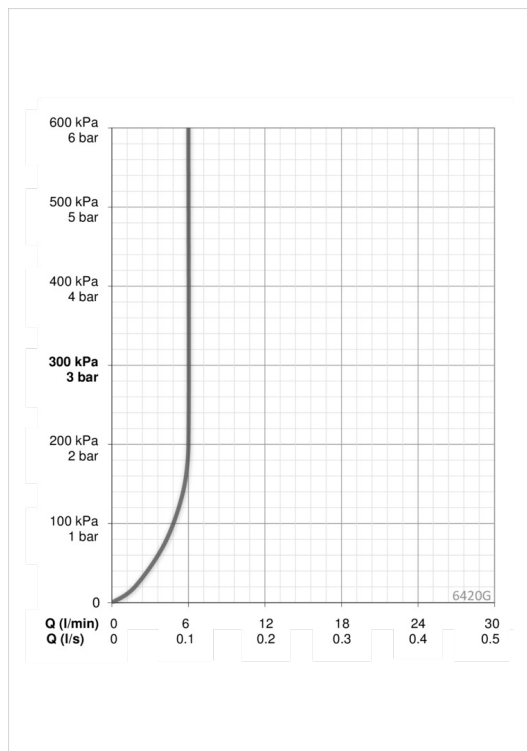
Afterflow period	2 s ± 1 s
Max. flow period	2 min

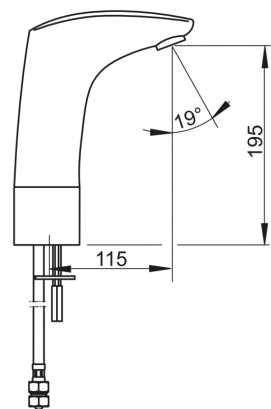
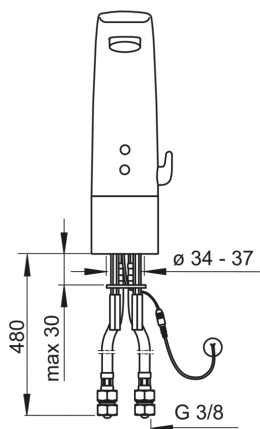
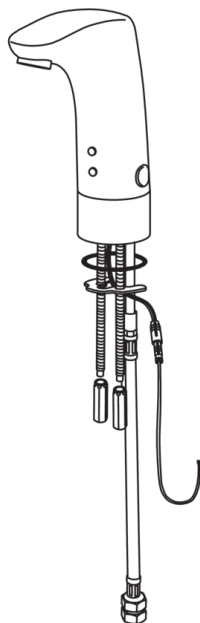
Electronic properties

Electrical Connection	12 V
-----------------------	-------------

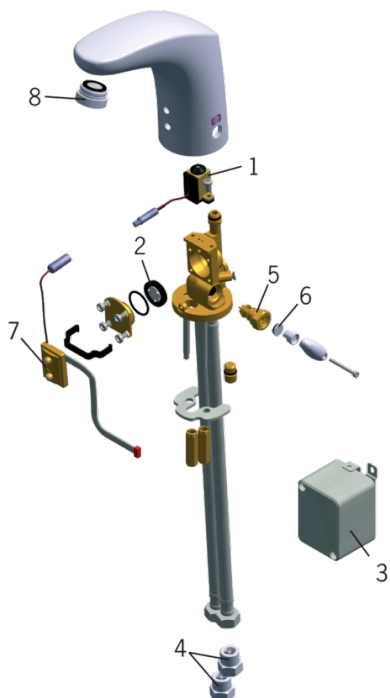
Regulations

EMC Directive	CE 2004/108/EY
EN standard	EN 15091
Noise class	I (ISO 3822)
Protection class	IP 55



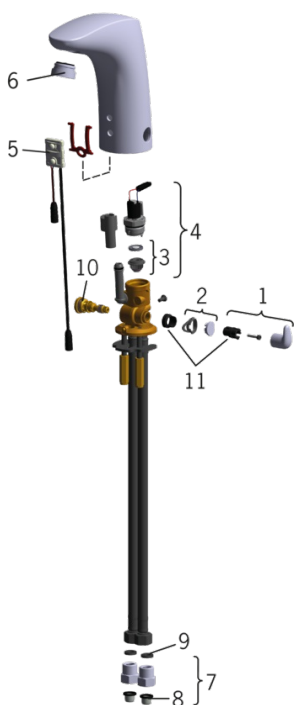


Spare parts



SP6220G

	Name	Code
01	Pilot valve, 3/03-	199390V
02	Membrane for solenoid valve	198298V
03	Power source box, 230 V	198693
04	One-way valve with litter screen	198473/2
05	Temperature regulator	198484V
06	Mixing plug	198485V
07	Sensor, 6 V	198682V
08	Aerator and key, M24x1, 6 l/min	198692



SP6420G

	Name	Code
01	Pilot valve	600452V
02	Membrane for solenoid valve	198298V
03	One-way valve with litter screen	198473/2
04	Temperature regulator	198484V
05	Mixing plug	198485V
06	Sensor, 12 V	600656V
07	Aerator and key, M24x1, 6 l/min	198692
08	Litter filters	199257/2
09	Gasket, 14.5/8.5x1.5	119512/10